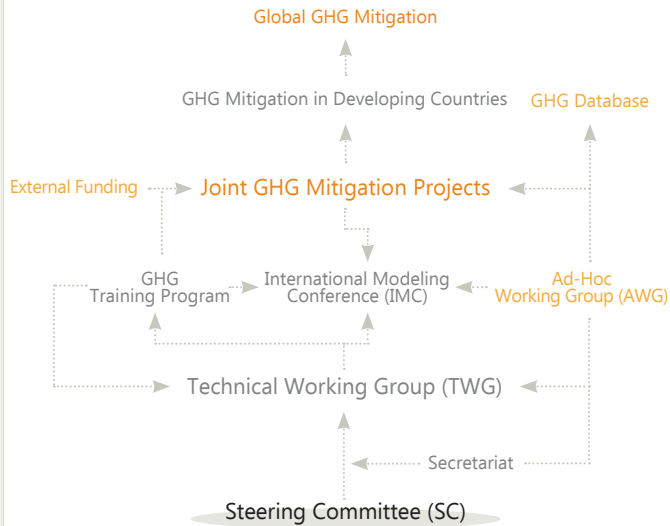


About GIR

Greenhouse Gas Inventory and Research Center of Korea (GIR), a government institute affiliated with the Ministry of Environment, serves as a think-tank on GHG inventory & mitigation. GIR manages the National GHG Management System and Emission Trading Scheme, supports establishing national & sectoral GHG reduction targets, and conducts research on GHG mitigation modeling. For global networking and cooperation, GIR organizes Cooperative Green Growth Modeling Forum (C2GMF) and International Modeling Conference (IMC) as well as its annual GHG training program.

Cooperative Green Growth Modeling Forum



Greenhouse Gas Inventory and Research Center of Korea (GIR)
Seoul, Republic of Korea
www.gir.go.kr/eng | email : c2gmfg@gmail.com

2014 C2GMF Photo



Venue

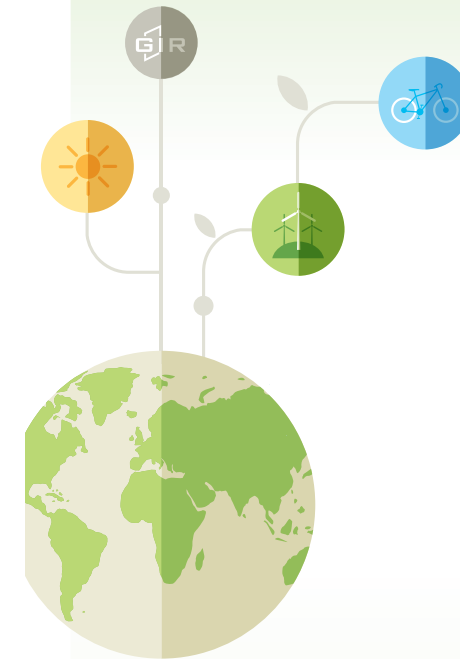
THE PLAZA Hotel Seoul, 119 Sogong-ro, Jung-gu, Seoul, Korea 100-864



2015 C2GMF 9th Steering Committee (SC)

July 1st, 2015

THE PLAZA Hotel, Seoul, Republic of Korea



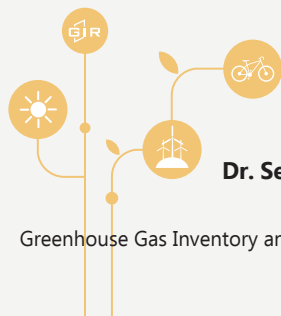
Organized and Sponsored by
Ministry of Environment
Greenhouse Gas Inventory and Research Center of Korea [GIR]

Welcome

At the International Conference on Post-Kyoto Climate Change Mitigation Modeling-held on June 17-18, 2010, after the official launch of the Greenhouse Gas Inventory and Research Center of Korea (GIR)-a proposal was introduced to build cooperative modeling efforts among developing countries.

In the midst of international attention on developing countries' response to the Cancun Agreement and growing conviction that a shift is necessary toward sustainable Green Growth patterns of development, GIR is taking an initial step to expand the collaborative network among governments and climate change experts in support of developing countries' Green Growth strategies.

We hope you will be able to join us in these important discussions at this event allowing us to share experiences of climate change mitigation modeling from developed and developing countries, and strengthen the international cooperation infrastructure toward the Green Growth of developing countries.



Dr. Seung Jick Yoo
President

Greenhouse Gas Inventory and Research Center of Korea (GIR)

Program Schedule

Time	Session	Speaker
9:30-10:00 (30')	Registration	
10:00-10:30 (30')	Opening	
10:00-10:10 (10')	Welcoming Remark	Gunil Shin
10:10-10:30 (20')	Review of Previous Meetings and Intro	GIR
10:30-11:50 (80')	Country Case - 1 (Chaired by Erick Masafu)	
10:30-10:45 (15')	Kenya	Issak Elmi
10:45-11:00 (15')	Ghana	Joseph Baffoe
11:00-11:15 (15')	Mexico	David Mitre
11:15-11:30 (15')	Argentina	Alvaro Zopatti
11:30-11:50 (20')	Q & A (Advised by Ju Youn Kang, Korea Environment Institute)	
11:50-13:10 (80')	Lunch	
13:10-14:30 (80')	Country Case - 2	
13:10-13:25 (15')	Nepal	Ritu Pantha
13:25-13:40 (15')	Malaysia	Audrey Liwan
13:40-13:55 (15')	Cambodia	Vichet Ratha Khlok
13:55-14:10 (15')	Azerbaijan	Saqif Manaphov
14:10-14:30 (20')	Q & A (Advised by Ju Youn Kang, Korea Environment Institute)	
14:30-14:50 (20')	Coffee Break	
14:50-17:40 (170')	AIPC* Project and Next Issues of C2GMF	
14:50-15:20 (30')	Intro of AIPC Project and Q & A	GIR
15:20-16:00 (40')	AIPC Presentations	AIPC Applicants
16:00-16:30 (30')	Case Study of GCF Project	Samjong KPMG
16:30-17:30 (60')	Minutes	ALL
17:30-17:40 (10')	Closing	Gunil Shin

*AIPC : Advancing GHG Inventory System in Pilot Country - Applying Korean Experience

Objectives

Launched by the Greenhouse Gas Inventory and Research Center of Korea (GIR), C2GMF is a unique and creative platform for joint GHG inventory and mitigation research and/or projects in developing countries, differentiating its work from other international GHG-related cooperation by supporting bottom-up activities in developing countries to mitigate GHG emissions by sector in practice.

Steering Committee (SC)

The Steering Committee serves as the leading decision-making body of the collaborative C2GMF framework.

Topic

- The effect of climate change in our country: How it changed /will change our lives

Roles

- Search and recruit most appropriate and passionate researchers for annual TWG exercise. (e.g. Building and/or Waste sector in 2014)
- Share the current status of GHG-related policy and projects.
- Develop a proper and agreeable Survey Questionnaire to share qualitative and quantitative GHG systems of C2GMF member countries, and for the uses of identifying limitations and solutions.

Eligibility

Must be a government official from the department that is responsible for Greenhouse Gas Inventory in his/her representing country

2015 Participating Countries

- Argentina
- Azerbaijan
- Cambodia
- Nepal
- Kenya
- Malaysia
- Mexico
- Ghana